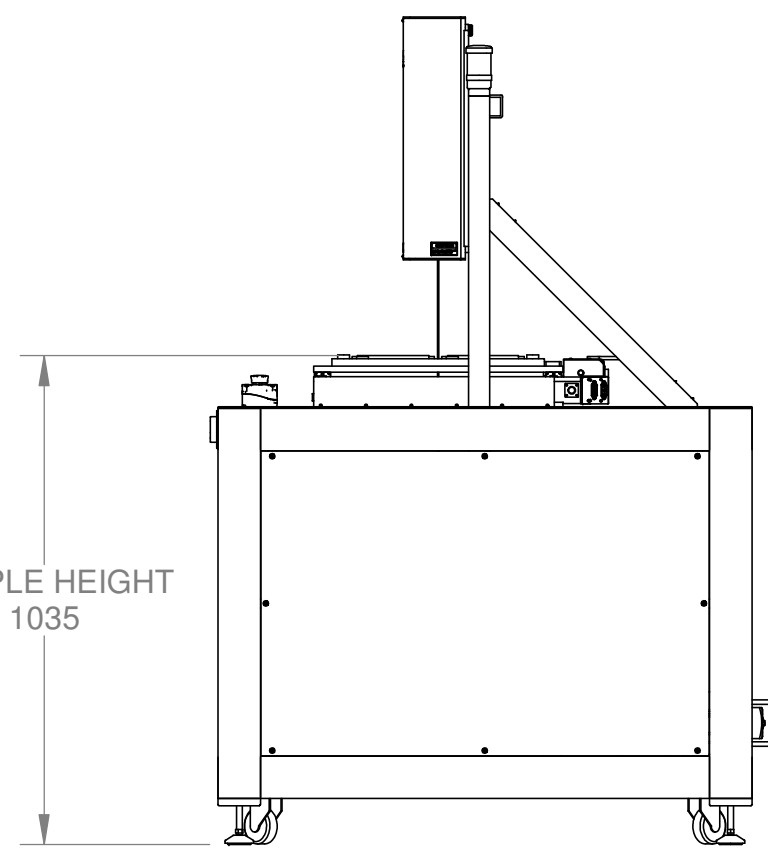
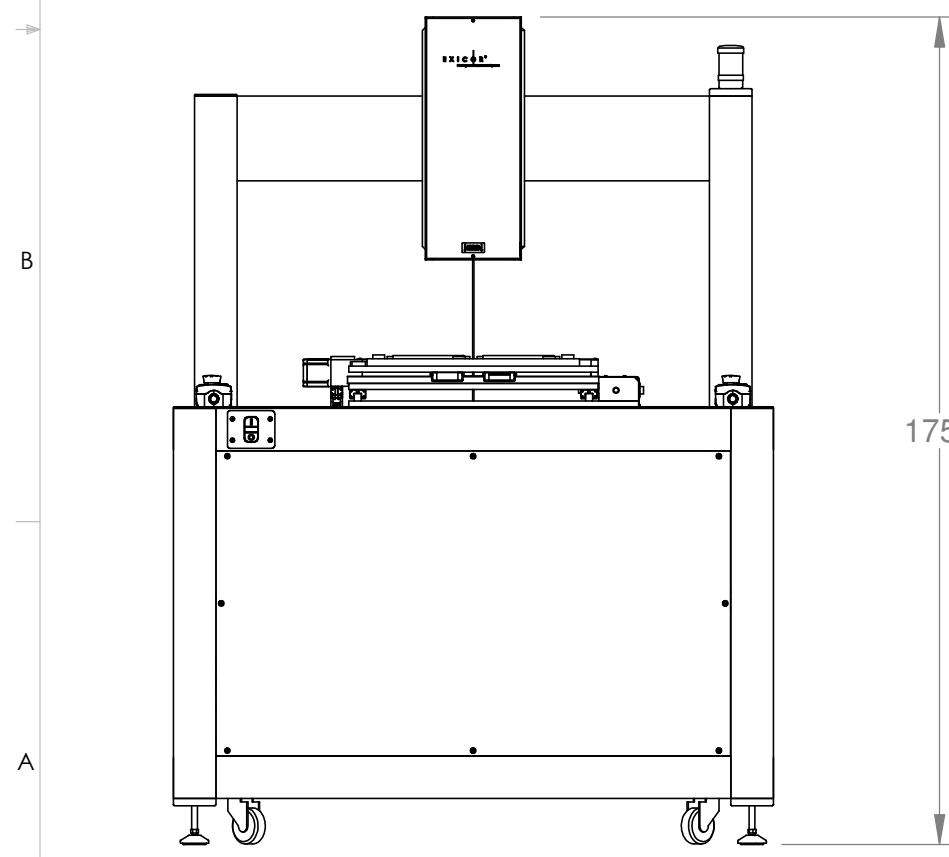
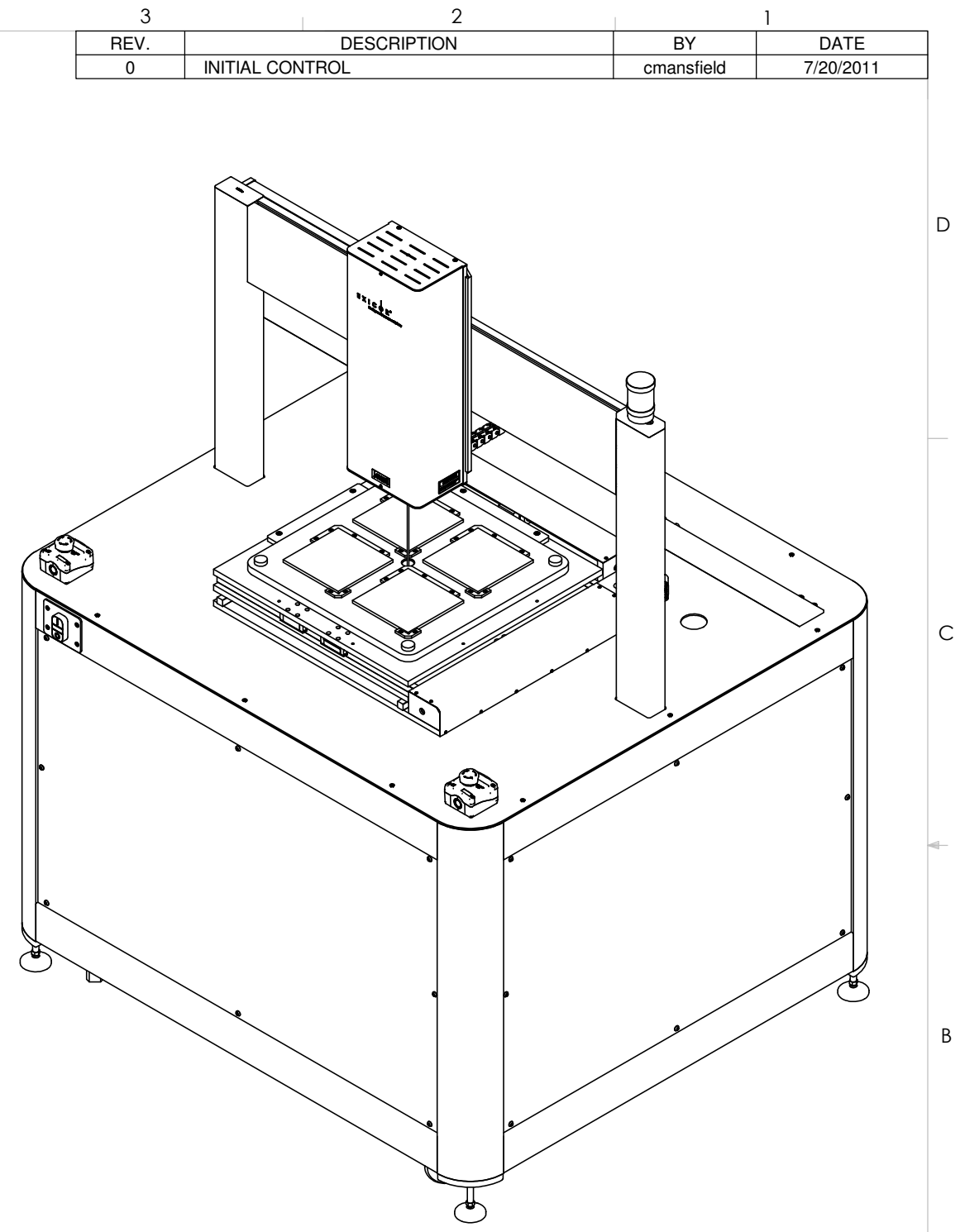
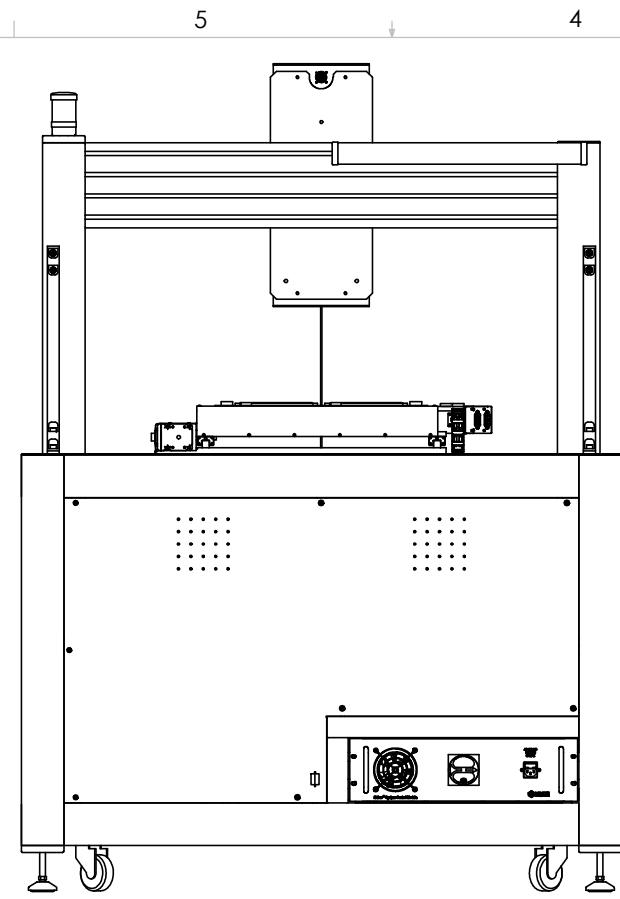
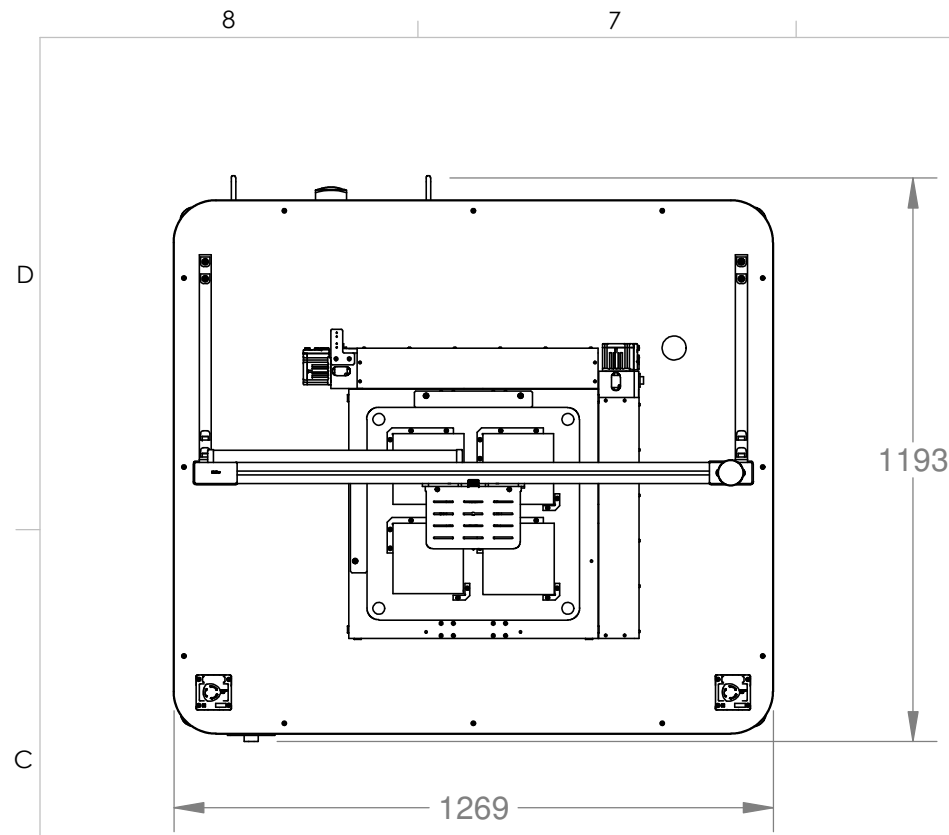



REV.	DESCRIPTION	BY	DATE
0	INITIAL CONTROL	cmansfield	7/20/2011



DIMENSIONS: mm

UNSPECIFIED LIMITS DIMENSIONS ARE IN INCHES		DO NOT SCALE DRAWING		 HINDS Instruments, Inc. <small>7245 NW Evergreen Pkwy Hillsboro, OR 97124 PHONE (503) 690-2000 FAX (503) 690-3000</small>	
FRACTIONS	± 1/32	DATE PRINTED:		Exicor Multi-Quadrant 300AT - OD	
DECIMALS	.XX ± .010 .XXX ± .005	APPROVALS			
HOLE DIA's	.XX ± .010 .XXX ± .003 - .001	DATE		cmansfield 7/20/11	
ANGLES	± 0° 30'	CHECKED		MATERIAL	
BENDS	± 2°	MATERIAL		FINISH	
PERPENDICULARITY	.003/INCH	FINISH		SIZE B FSCM NO. DWG. NO. 010-0000-067-OD REV. 0 SCALE 1:16 RELEASE DATE: SHEET 1 OF 2	
CONCENTRICITY	.003 TIR	STRAIGHTNESS &/OR FLATNESS: .005/INCH THREADS: EXTERNAL - CLASS 2A INTERNAL - CLASS 2B UNMARKED ANGLES, BENDS & INTERSECTIONS: 90° MACHINED SURFACES: 63 OR BETTER REMOVE ALL BURRS & SHARP CORNERS		SAMPLES MUST BE APPROVED BY ENGINEERING DEPARTMENT PRIOR TO STARTING PRODUCTION	