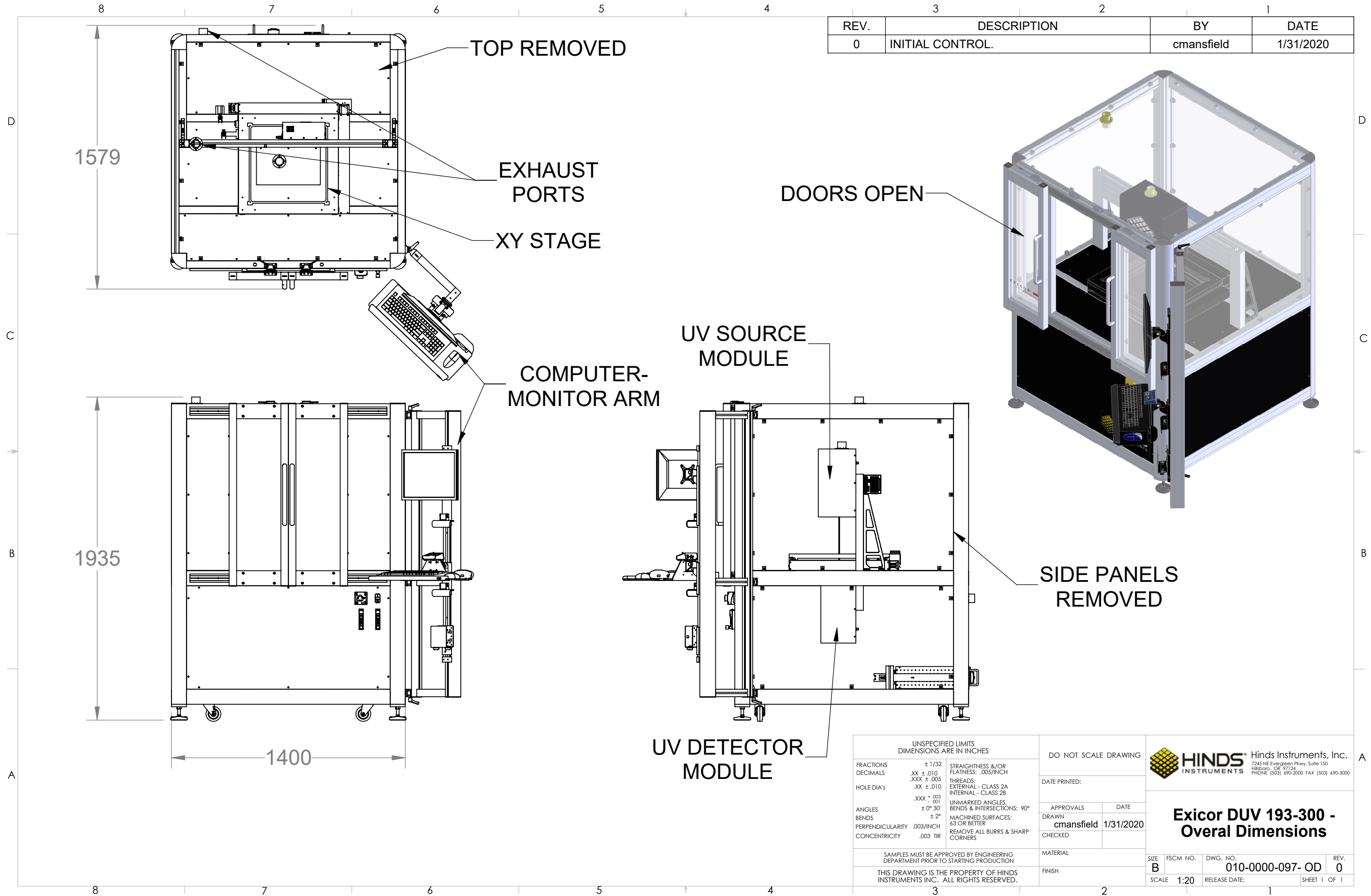


| REV. | DESCRIPTION | BY | DATE |
|------|------------------|-----------|-----------|
| 0 | INITIAL CONTROL. | cmanfield | 1/31/2020 |



UNSPECIFIED LIMITS
DIMENSIONS ARE IN INCHES

| | | | |
|------------------|-------------------------------------|----------------------------------|--|
| FRACTIONS | ± 1/32 | STRAIGHTNESS &/OR FLATNESS: | .005/INCH |
| DECIMALS | .XX ± .010 .XXX ± .005 | THREADS: | EXTERNAL - CLASS 2A INTERNAL - CLASS 2B |
| HOLE DIA's | .XX ± .010 .XXX ± .003 - .001 | UNMARKED ANGLES: | BENDS & INTERSECTIONS: 90° |
| ANGLES | ± 0° 30' | MACHINED SURFACES: | 63 OR BETTER |
| BENDS | ± 2° | REMOVE ALL BURRS & SHARP CORNERS | |
| PERPENDICULARITY | .003/INCH | | |
| CONCENTRICITY | .003 TIR | | |

SAMPLES MUST BE APPROVED BY ENGINEERING DEPARTMENT PRIOR TO STARTING PRODUCTION

THIS DRAWING IS THE PROPERTY OF HINDS INSTRUMENTS INC. ALL RIGHTS RESERVED.

DO NOT SCALE DRAWING

DATE PRINTED:

| APPROVALS | DATE |
|--------------------|-----------|
| DRAWN cmanfield | 1/31/2020 |
| CHECKED | |

MATERIAL

FINISH

HINDS Instruments, Inc.
7245 NE Evergreen Pkwy, Suite 150
Hillsboro, OR 97124
PHONE (503) 690-2000 FAX (503) 690-3000

Exicor DUV 193-300 - Overall Dimensions

| SIZE | FSCM NO. | DWG. NO. | REV. |
|------|----------|------------------|------|
| B | | 010-0000-097- OD | 0 |

SCALE 1:20 RELEASE DATE: SHEET 1 OF 1