



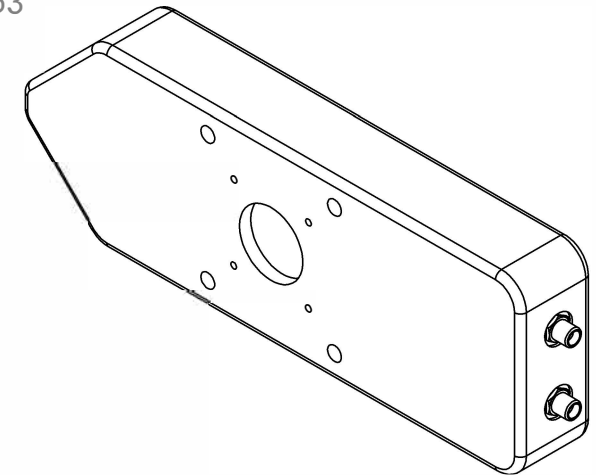
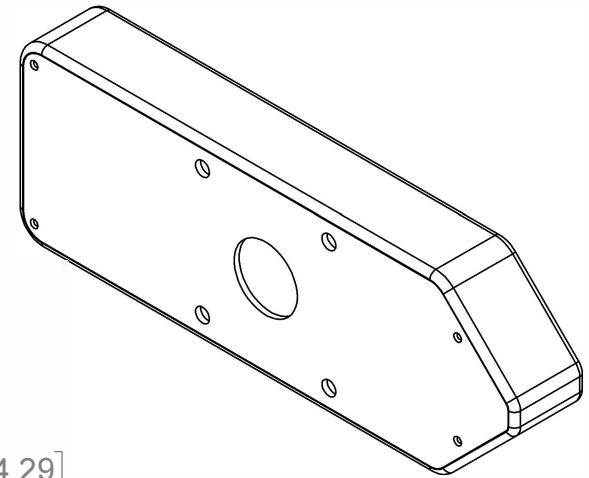
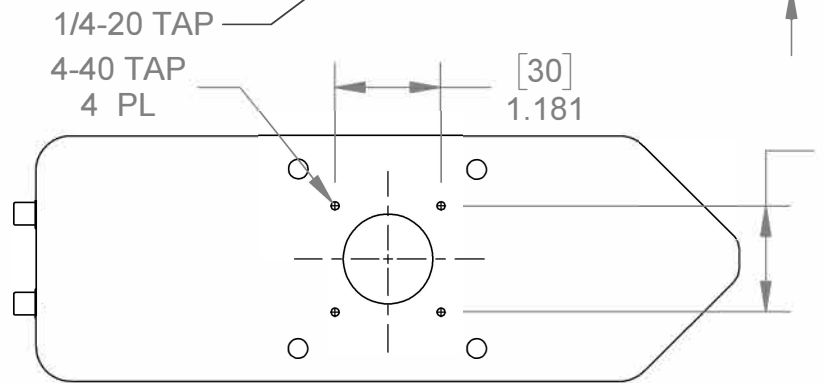
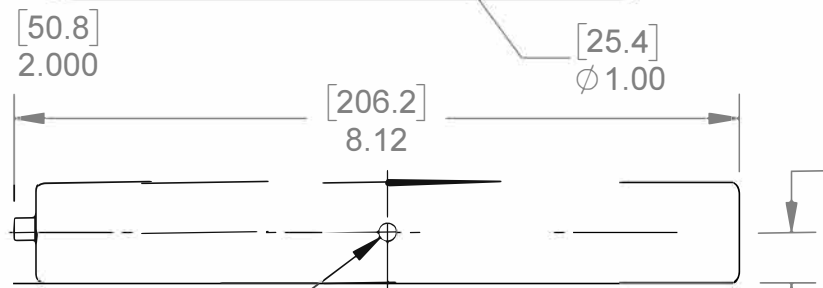
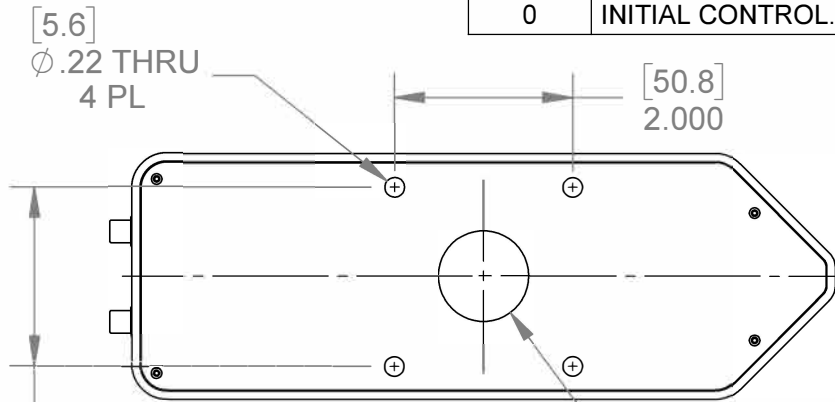
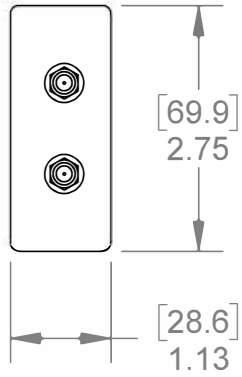
REV.	DESCRIPTION	BY	DATE
0	INITIAL CONTROL.	cmansfield	12/12/2018

D

C

B

A



D

C

B

A

UNSPECIFIED LIMITS DIMENSIONS IN INCHES	
FRACTIONS	± 1/32
DECIMALS	.XX ± .010 .XXX ± .005
HOLE DIA'S	.XX ± .005 .XXX ± .003 .001
ANGLES	± 0° 30'
BENDS	± 2°
PERPENDICULARITY	.003/INCH
CONCENTRICITY	.003 TIR
STRAIGHTNESS &/OR FLATNESS: .005/INCH	
THREADS: EXTERNAL - CLASS 2A INTERNAL - CLASS 2B	
UNMARKED ANGLES, BENDS & INTERSECTIONS: 90°	
MACHINED SURFACES: 63 OR BETTER	
REMOVE ALL BURRS & SHARP CORNERS	
SAMPLES MUST BE APPROVED BY ENGINEERING DEPARTMENT PRIOR TO STARTING PRODUCTION	
THIS DRAWING IS THE PROPERTY OF HINDS INSTRUMENTS INC. ALL RIGHTS RESERVED.	

DO NOT SCALE DRAWING	
DATE PRINTED	
APPROVALS	DATE
DRAWN cmansfield	12/12/18
CHECKED	
MATERIAL	
FINISH	



Head Assy, II/37, 42, 50 ZS, PEM-200 - OD

SIZE A	FSCM NO.	DRAWING NO. 12122018-03-OD	REV. 0
SCALE 1:2.15	RELEASE DATE:	SHEET 1	OF 1

8 7 6 5 4 3 2 1