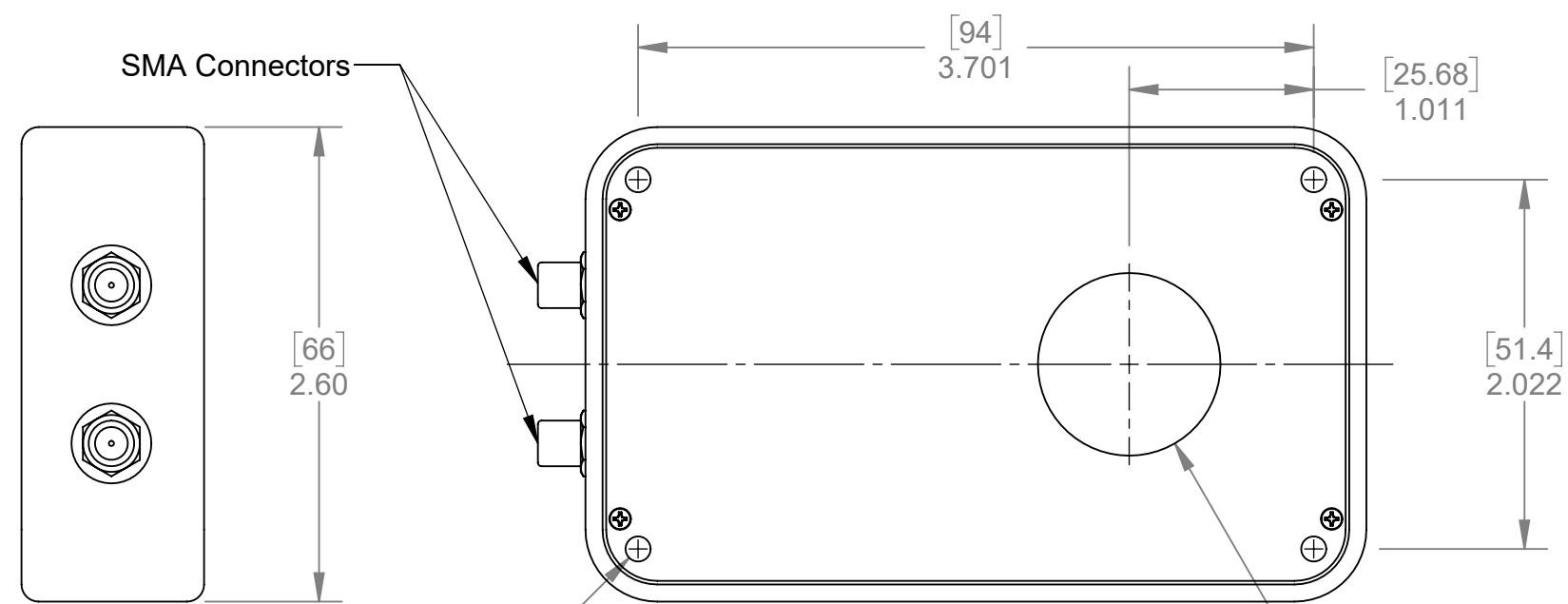




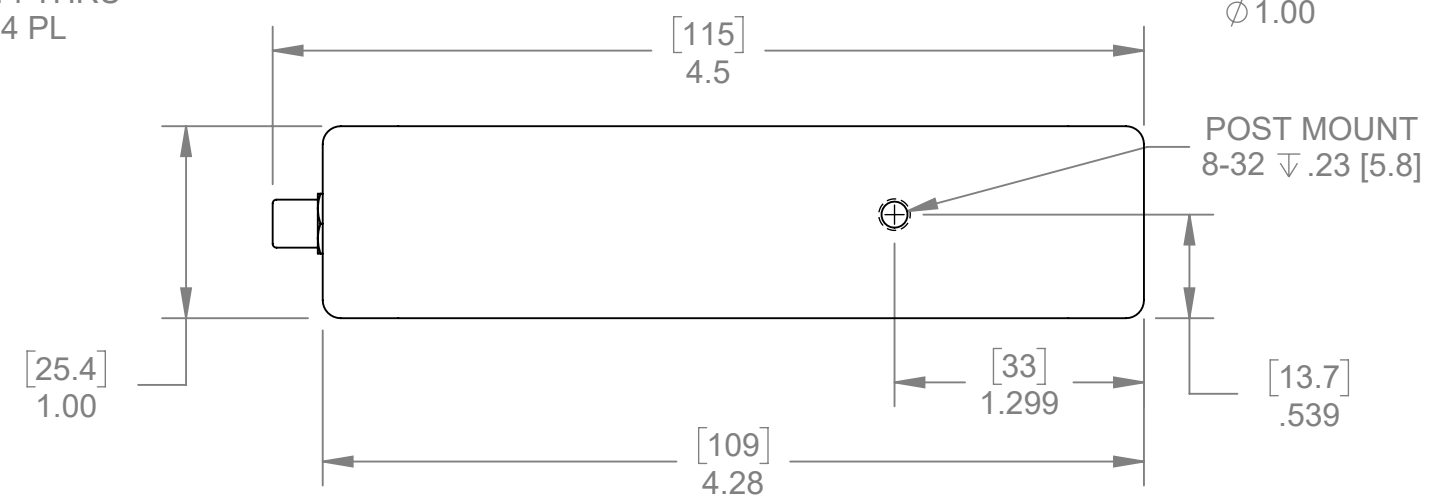
REV.	DESCRIPTION	BY	DATE
0	INITIAL CONTROL	cmansfield	7/10/2019

D
C
B
A

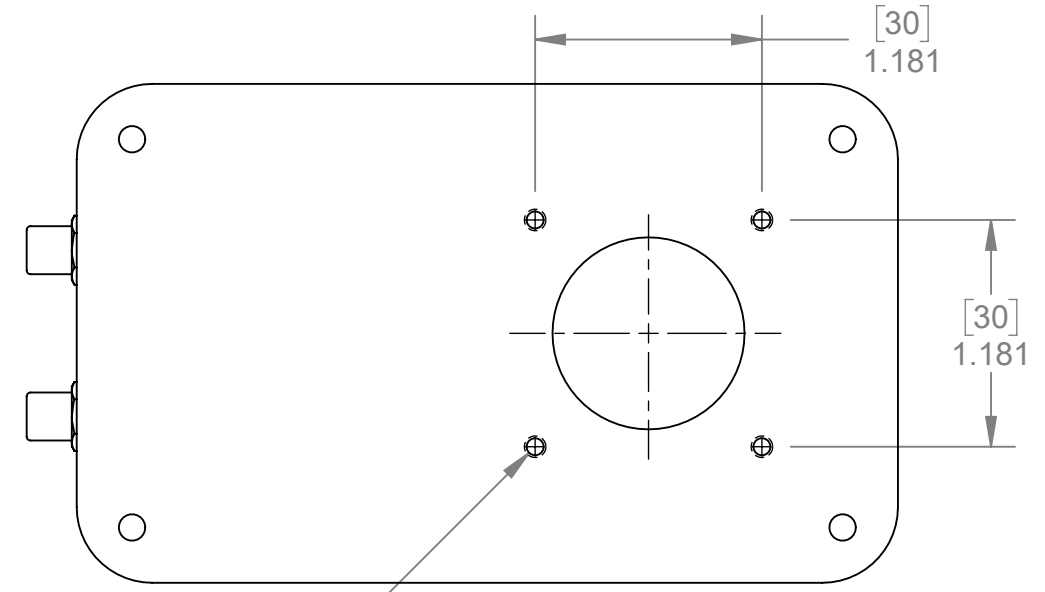


MOUNTING HOLES
 ϕ .14 THRU
 4 PL

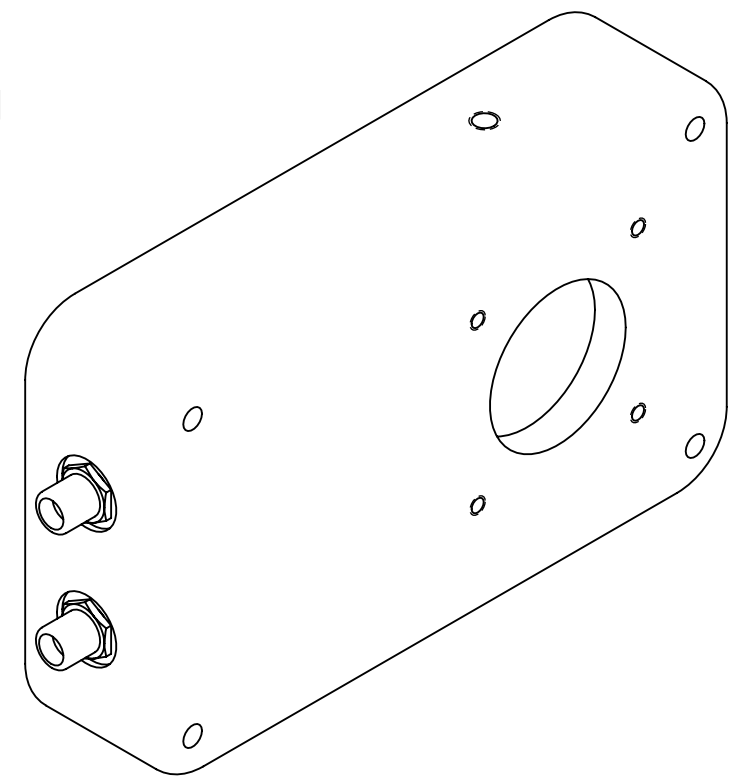
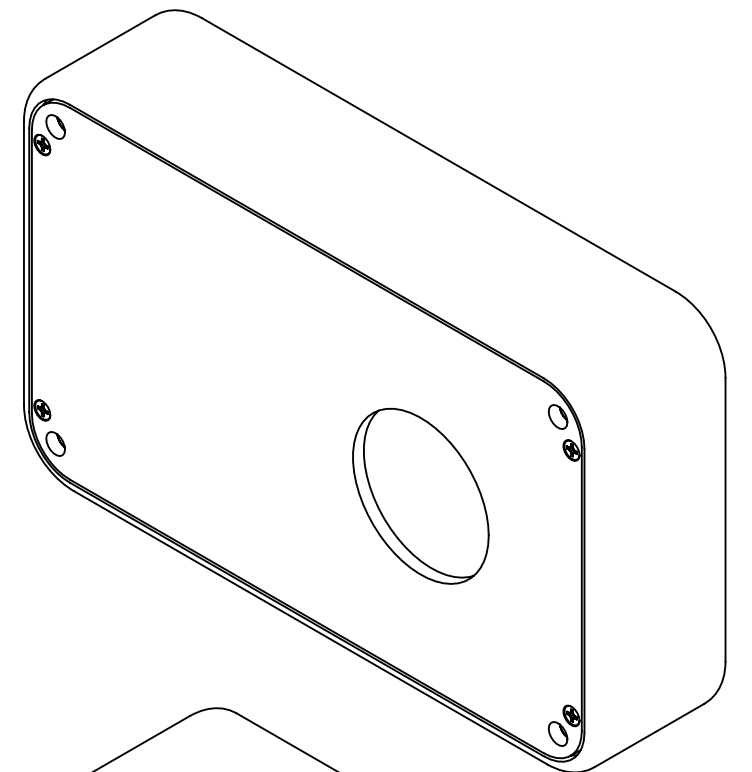
CLEAR APERTURE
 ϕ 1.00



POST MOUNT
 8-32 ∇ .23 [5.8]



4-40 ∇ .2 [5]
 4 PL



UNSPECIFIED LIMITS DIMENSIONS ARE IN INCHES		DO NOT SCALE DRAWING		HINDS Instruments, Inc. <small>7245 NE Evergreen Pkwy Hillsboro, OR 97124 PHONE (503) 690-2000 FAX (503) 690-3000</small>	
FRACTIONS	$\pm 1/32$	STRAIGHTNESS &/OR FLATNESS:	.005/INCH		
DECIMALS	.XX \pm .010 .XXX \pm .005	THREADS:	EXTERNAL - CLASS 2A INTERNAL - CLASS 2B		
HOLE DIA's	.XX \pm .010 .XXX \pm .003 - .001	UNMARKED ANGLES, BENDS & INTERSECTIONS:	90°		
ANGLES	$\pm 0^{\circ} 30'$	MACHINED SURFACES:	63 OR BETTER		
BENDS	$\pm 2^{\circ}$	REMOVE ALL BURRS & SHARP CORNERS			
PERPENDICULARITY	.003/INCH				
CONCENTRICITY	.003 TIR				
SAMPLES MUST BE APPROVED BY ENGINEERING DEPARTMENT PRIOR TO STARTING PRODUCTION		MATERIAL		DATE PRINTED:	
THIS DRAWING IS THE PROPERTY OF HINDS INSTRUMENTS INC. ALL RIGHTS RESERVED.		FINISH		APPROVALS	DATE
				DRAWN	7/10/19
				CHECKED	
SIZE	FSCM NO.	DWG. NO.	REV.		
B		07102019-OD	0		
SCALE	1:1	RELEASE DATE:	SHEET 1 OF 1		

**Head Assembly, 55-60
 UC - Overall Dimensions**

8 7 6 5 4 3 2 1