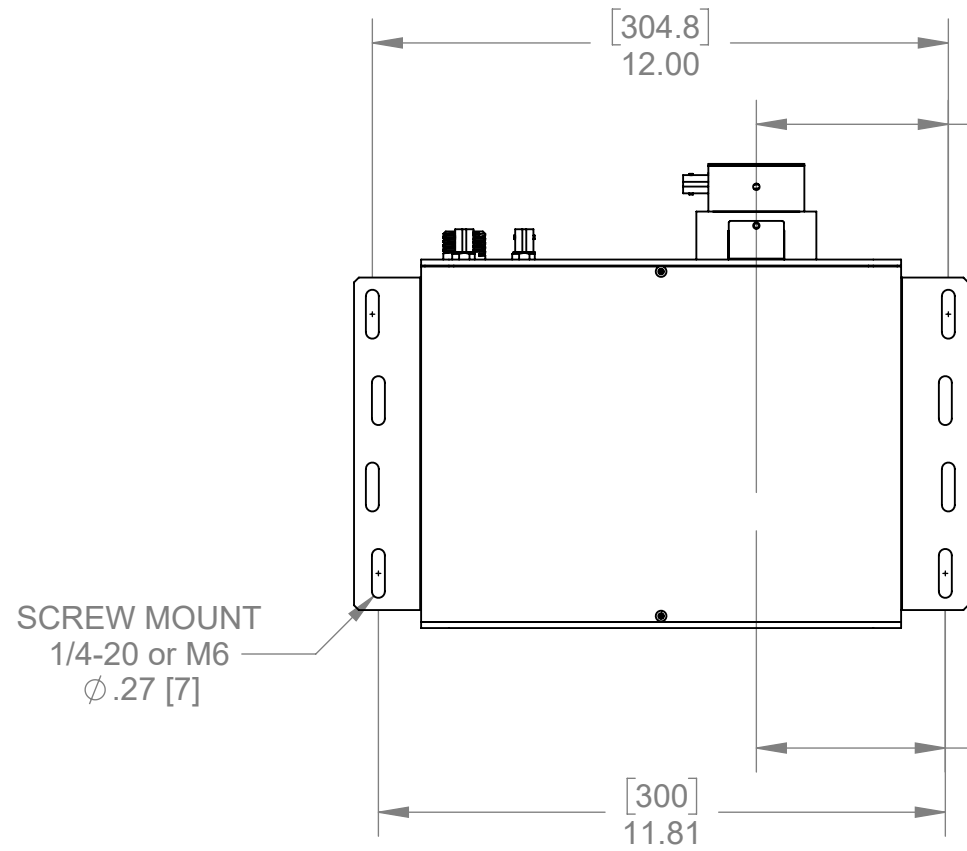
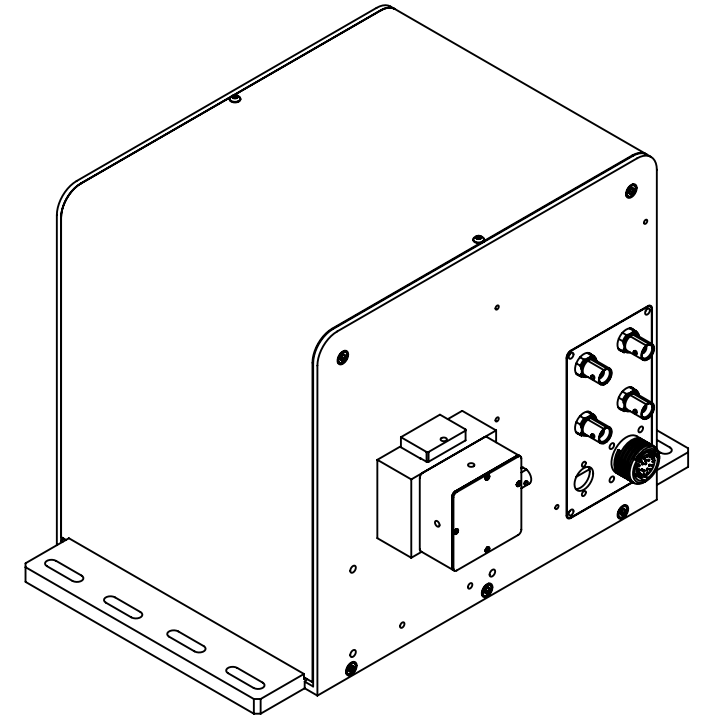
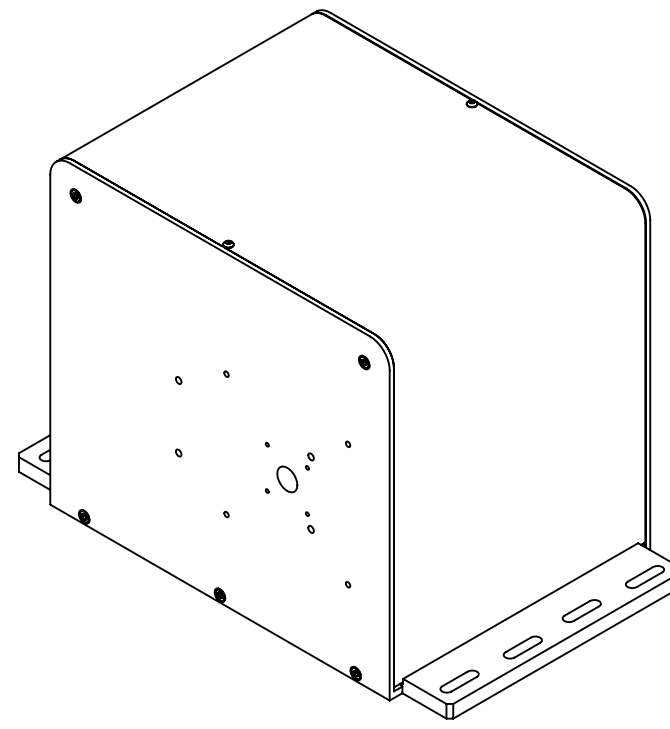


REV.	DESCRIPTION	BY	DATE
0	INITIAL CONTROL.	cmansfield	3/23/2020

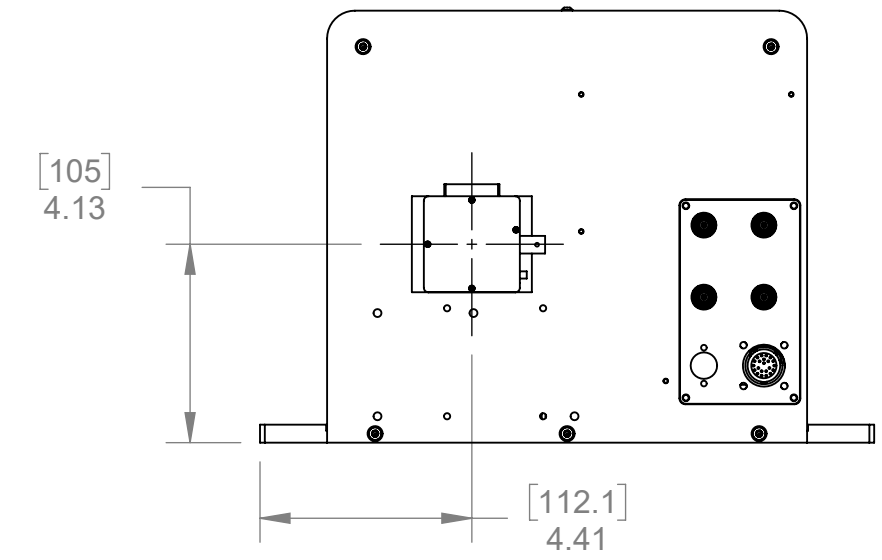
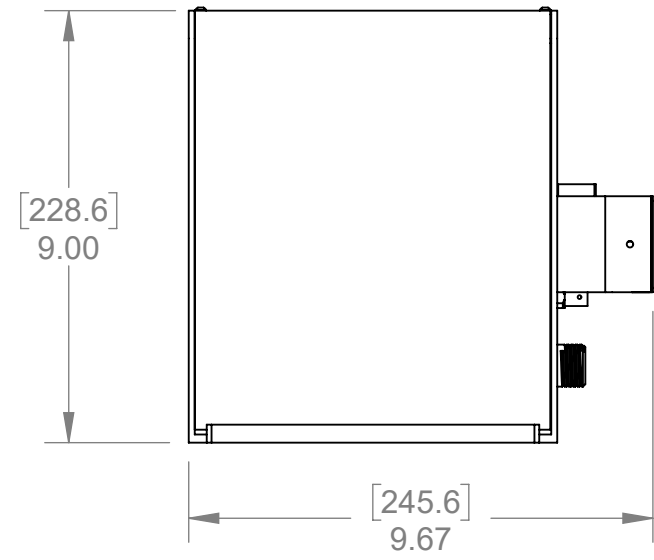
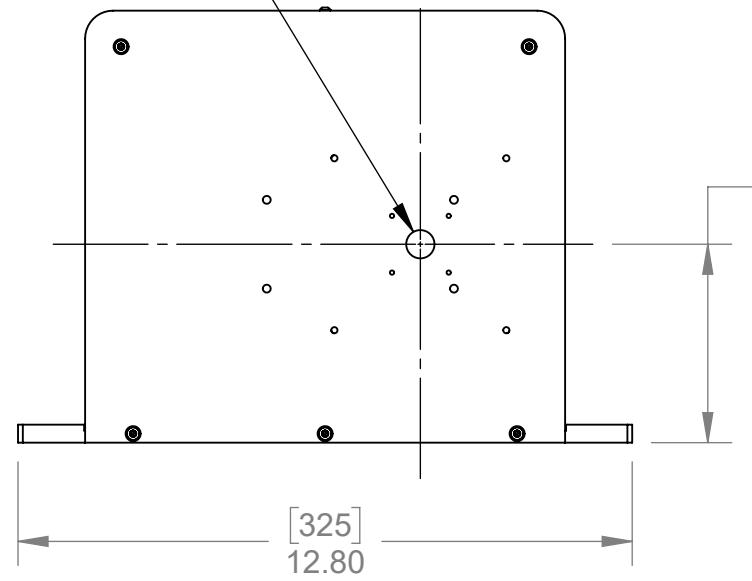


BEAM LINE  
IMPERIAL HOLES  
[101.6]  
4.000

BEAM LINE  
METRIC HOLES  
[100]  
3.937



BEAM ENTRANCE



**DIMENSIONS: INCH[mm]**

UNSPECIFIED LIMITS DIMENSIONS ARE IN INCHES	
FRACTIONS	± 1/32
DECIMALS	.XX ± .010 .XXX ± .005
HOLE DIA's	.XX ± .010 .XXX ± .003 ± 0° 30'
ANGLES	± 2°
BENDS	± 2°
PERPENDICULARITY	.003/INCH
CONCENTRICITY	.003 TIR
STRAIGHTNESS &/OR FLATNESS: .005/INCH	
THREADS: - CLASS 2A INTERNAL - CLASS 2B	
UNMARKED ANGLES, BENDS & INTERSECTIONS: 90°	
MACHINED SURFACES: 63 OR BETTER	
REMOVE ALL BURRS & SHARP CORNERS	
SAMPLES MUST BE APPROVED BY ENGINEERING DEPARTMENT PRIOR TO STARTING PRODUCTION	
THIS DRAWING IS THE PROPERTY OF HINDS INSTRUMENTS INC. ALL RIGHTS RESERVED.	

DO NOT SCALE DRAWING	
DATE PRINTED:	
APPROVALS	DATE
DRAWN cmansfield	3/23/2020
CHECKED	
MATERIAL	
FINISH	

**HINDS** Instruments, Inc.  
7245 NE Evergreen Pkwy, Suite 150  
Hillsboro, OR 97124  
PHONE (503) 690-2000 FAX (503) 690-3000

**Stokes Pol. DP Master  
Assembly. - DET-200 - OD**

SIZE B	FSCM NO.	DWG. NO. 03232020-OD	REV. 0
SCALE 1:4	RELEASE DATE:	SHEET 1 OF 1	